

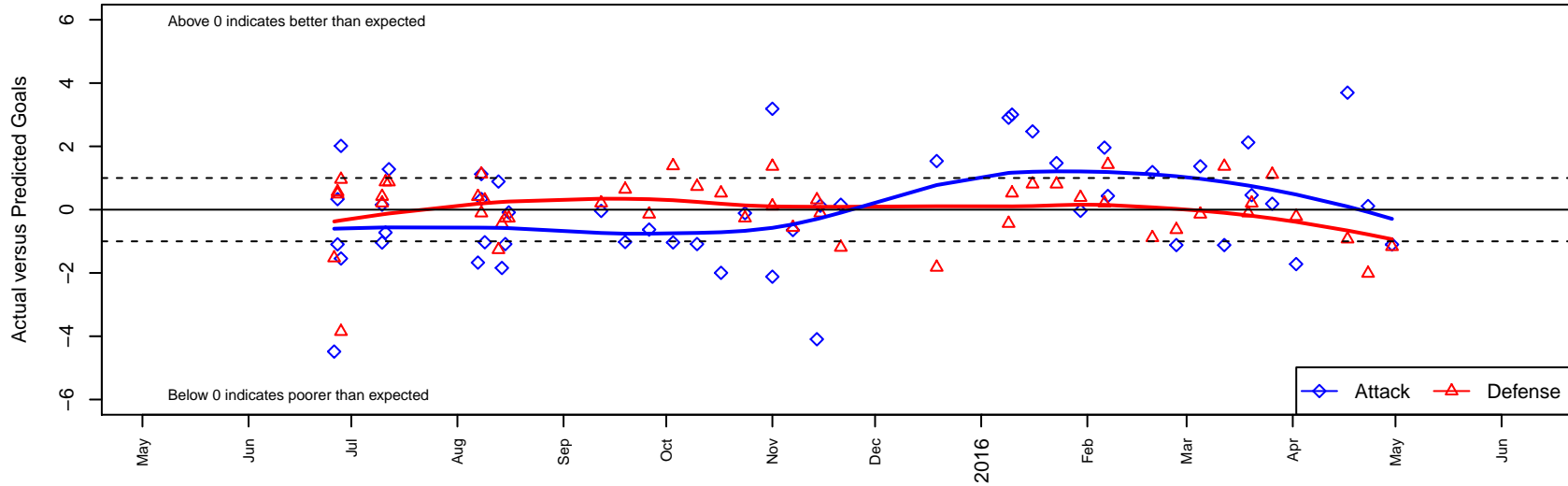
Kent United Green B01

Kent United
 Kent, WA
 B01 total strength=1237
 attack=5.97 defense=3.46
 fall league = NPSL Div 1 U14, SSUL B01 Div 1
 spr league = Spr NPSL Div 1 U14

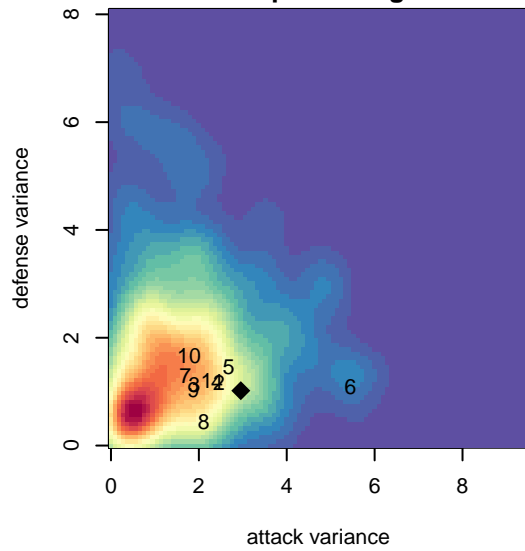
alt names used:
 KENT UNITED B01 GREEN ()
 Kent United B01 Green
 Kent United B01 Green
 KU 01 Green
 Kent United B01 Green
 Kent United B01 Green
 Kent United KU B01 Green
 Kent United B01 Green
 Kent United B01 Green

Venues played:
 2015 RVS Classic BU14
 2015 KCC BU14
 2015 Blast Off BU14 A
 2015 Bigfoot Silver U14
 2015 NPSL Division 1 U14
 2015 SSUL B01 Div 1 Select
 2015 Founders Cup B01
 2015 Spr NPSL Division 1 U14
 2015 WYS Presidents Cup B01 Division 2

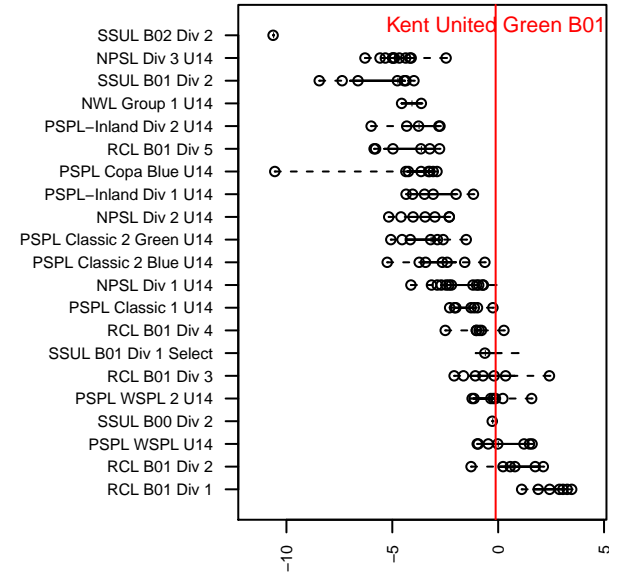
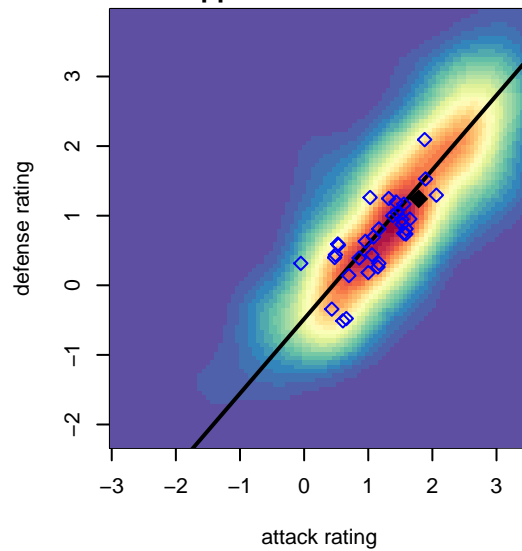
Kent United Green B01
Dots are actual minus expected GF (blue circles) and GA (red triangles).
Blue line is smoothed change in attack strength. Red is smoothed change in defense strength.



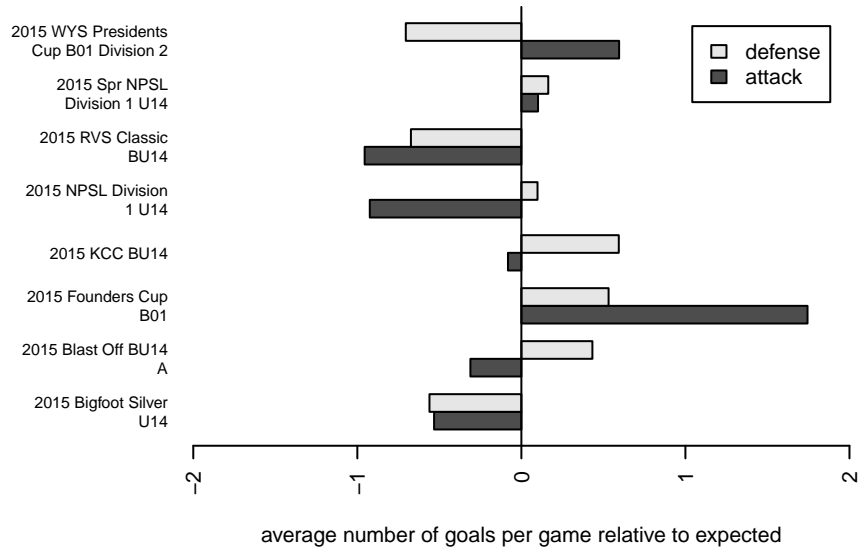
**attack and defense variance (black dot)
relative to other teams
and top 10 in region**



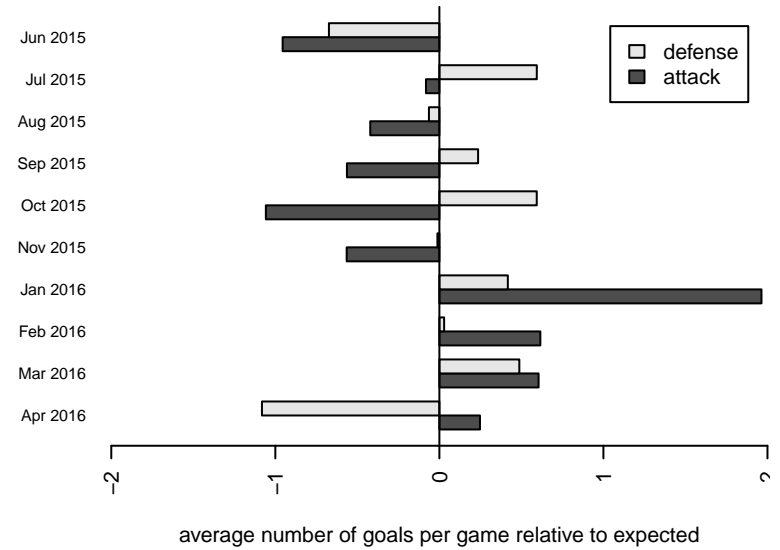
**attack and defense rating
relative to others at age
and all opponents in last 13 months**



Performance relative to 13 month average



Performance relative to 13 month average



date	home		away		venue	pred.home	pred.away
2016-04-30	Kent United Green B01	1	Crossfire Premier C B01	2	2015 WYS Presidents Cup B01 Division 2	2.10	0.83
2016-04-23	Kent United Green B01	3	Eastside FC Blue B01	3	2015 WYS Presidents Cup B01 Division 2	2.89	0.99
2016-04-17	SSC Shadow B B01	2	Kent United Green B01	6	2015 WYS Presidents Cup B01 Division 2	1.07	2.30
2016-04-02	Kent United Green B01	3	Whatcom Rangers White B01	1	2015 WYS Presidents Cup B01 Division 2	4.72	0.78
2016-03-26	Kent United Green B01	2	South Tacoma United Blanco B01	0	2015 Spr NPSL Division 1 U14	1.81	1.11
2016-03-20	Harbor Premier Green B01	1	Kent United Green B01	3	2015 WYS Presidents Cup B01 Division 2	1.21	2.54
2016-03-19	Kent United Green B01	6	FWFC Thunder Bolts B01	1	2015 WYS Presidents Cup B01 Division 2	3.88	0.89
2016-03-12	Storm King Blue B01	0	Kent United Green B01	1	2015 Spr NPSL Division 1 U14	1.37	2.12
2016-03-05	Kent United Green B01	5	Crossfire Select Taylor B01	1	2015 Spr NPSL Division 1 U14	3.63	0.86
2016-02-27	Kent United Green B01	1	Storm King Blue B01	2	2015 Spr NPSL Division 1 U14	2.12	1.37
2016-02-20	South Tacoma United Blanco B01	2	Kent United Green B01	3	2015 Spr NPSL Division 1 U14	1.11	1.81
2016-02-07	Kent United Green B01	2	Washington Timbers Burgundy B01	0	2015 Founders Cup B01	1.57	1.43
2016-02-06	Kent United Green B01	4	Seattle United W Blue B01	1	2015 Founders Cup B01	2.04	1.21
2016-01-30	Kent United Green B01	2	NSC Vortex B01	1	2015 Founders Cup B01	2.04	1.38
2016-01-23	Kent United Green B01	4	Pacific FC Orange B01	0	2015 Founders Cup B01	2.53	0.81
2016-01-16	Kent United Green B01	5	Pacific FC Orange B01	0	2015 Founders Cup B01	2.53	0.81
2016-01-10	Kent United Green B01	6	Seattle United S Blue B01	0	2015 Founders Cup B01	3.00	0.52
2016-01-09	NWSC Islanders B01	1	Kent United Green B01	11	2015 Founders Cup B01	0.56	8.10
2015-12-19	Kent United Green B01	3	TUSK United B01	3	2015 NPSL Division 1 U14	1.46	1.18
2015-11-21	Kent United Green B01	2	NSC Annihilation B01	2	2015 NPSL Division 1 U14	1.85	0.81
2015-11-15	FWFC Thunder Bolts B01	1	Kent United Green B01	4	2015 SSUL B01 Div 1 Select	0.89	3.88
2015-11-14	Kent United Green B01	0	BYSC Select B01	0	2015 NPSL Division 1 U14	4.09	0.31
2015-11-07	Mercer Island FC Heat B01	1	Kent United Green B01	3	2015 NPSL Division 1 U14	0.44	3.64
2015-11-01	Kent United Green B01	0	Storm King Blue B01	0	2015 NPSL Division 1 U14	2.12	1.37
2015-11-01	Kent United Green B01	5	South Tacoma United Blanco B01	1	2015 SSUL B01 Div 1 Select	1.81	1.11
2015-10-24	Seattle United Shoreline Blue B01	1	Kent United Green B01	4	2015 NPSL Division 1 U14	0.74	4.11
2015-10-17	Seattle United S Blue B01	0	Kent United Green B01	1	2015 NPSL Division 1 U14	0.52	3.00
2015-10-10	BIFC Blue B01	0	Kent United Green B01	2	2015 NPSL Division 1 U14	0.73	3.09

date	home		away		venue	pred.home	pred.away
2015-10-03	Kent United Green B01	1	NSC Vortex B01	0	2015 NPSL Division 1 U14	2.04	1.38
2015-09-26	Crossfire Select Taylor B01	1	Kent United Green B01	3	2015 NPSL Division 1 U14	0.86	3.63
2015-09-19	Crossfire Select Nakamura B01	0	Kent United Green B01	2	2015 NPSL Division 1 U14	0.64	3.02
2015-09-12	Kent United Green B01	2	Seattle United W Blue B01	1	2015 NPSL Division 1 U14	2.04	1.21
2015-08-16	Kent United Green B01	3	BIFC Blue B01	1	2015 Bigfoot Silver U14	3.09	0.73
2015-08-15	BIFC Blue B01	1	Kent United Green B01	2	2015 Bigfoot Silver U14	0.73	3.09
2015-08-14	Snohomish United Red B01	1	Kent United Green B01	2	2015 Bigfoot Silver U14	0.56	3.84
2015-08-13	Seattle United Shoreline Blue B01	2	Kent United Green B01	5	2015 Bigfoot Silver U14	0.74	4.11
2015-08-09	Seattle Celtic Green B01	1	Kent United Green B01	1	2015 Blast Off BU14 A	1.30	2.03
2015-08-08	Kent United Green B01	5	FWFC Thunder Bolts B01	1	2015 Blast Off BU14 A	3.88	0.89
2015-08-08	FWFC Blue B01	1	Kent United Green B01	2	2015 Blast Off BU14 A	2.12	1.66
2015-08-07	Kent United Green B01	9	Nortac Sparta Black B01	0	2015 Blast Off BU14 A	10.67	0.41
2015-07-12	Kent United Green B01	2	Mukilteo Rush B01	1	2015 KCC BU14	0.72	1.87
2015-07-11	Kent United Green B01	0	Mukilteo Rush B01	1	2015 KCC BU14	0.72	1.87
2015-07-10	Kent United Green B01	3	MVP Rapids White B01	0	2015 KCC BU14	2.84	0.42
2015-07-10	Seattle United W Blue B01	1	Kent United Green B01	1	2015 KCC BU14	1.21	2.04
2015-06-28	Kent United Green B01	3	Fusion FC 2002B	1	2015 RVS Classic BU14	0.99	1.96
2015-06-28	Slammers Orange B01	5	Kent United Green B01	1	2015 RVS Classic BU14	1.15	2.54
2015-06-27	Highline Premier Blue B01	0	Kent United Green B01	5	2015 RVS Classic BU14	0.49	4.67
2015-06-27	Kent United Green B01	7	NWSC Islanders B01	0	2015 RVS Classic BU14	8.10	0.56
2015-06-26	Kent United Green B01	2	Emerald City FC White B01	2	2015 RVS Classic BU14	6.48	0.47